



Trams to Newhaven

Project Newsletter



Construction Updates

Trams are scheduled to be operational in Leith and Newhaven by Spring 2023. All of the required track slab has been laid, and over 9,000 metres of communication and utility ducting has been installed. Main construction works are complete on 7 new tram stops. We've also installed 215 OLE poles, 100% of the total along the route, and have strung 2,723m of overhead cabling, 60% of the total. Over 4,300m of drainage infrastructure has also been installed.

Localised work sites

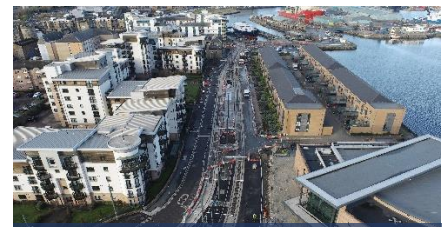
In the coming weeks we will be energising the overhead lines in order to begin a period of testing and commissioning. Further information on this will be issued in due course.

Localised works continue on carriage and footways throughout the route to install tram systems infrastructure, tram stop fit outs, the installation of overhead line equipment, installation of new signs, street lighting, landscaping, street furniture and traffic signalling. Traffic management and pedestrian diversions will be set up as required with any changes being communicated via the project's communication channels.

Following the incorporation of street lighting into the OLE poles, works are ongoing to remove old lighting columns. This requires localised work sites to undertake excavations and to disconnect the columns. Once removed, the excavations will be temporarily backfilled with full reinstatement taking place at a later date.

Cycle Lane

To accommodate the above works, both cycleways on Leith Walk remain closed and [diversion routes are in place](#). Please note there may be instances of emergency works being



Melrose Drive



Ocean Drive



Constitution Street



Leith Walk

Out of Hours Works

[There is a section on the project website that details planned out of hours working over the coming weeks.](#)

This section of the website will be updated on a regular basis and promoted through the project's twitter account. In order to minimise disruption to wider traffic network along the route and to keep our workers safe, cable pulling through the newly installed underground ducting, and the installation of cantilevers and overhead cables needs to be carried out at night when the site is unoccupied.

The nightshift works on the Overhead Line Equipment are carried out by specialist teams. We will endeavor to minimise disruption as much as possible and to undertake the work as quickly as possible.

Please note that these works are carried out on a rolling basis and that the timelines quoted relate to the whole section.

To minimise the impact on traffic, the project is undertaking the removal of old street lighting columns along the route between 7pm and 11pm.

Continuity Testing

Now that the overhead line has been installed from Leith Walk to Newhaven, continuity testing to ensure the OLE poles are earthed is required prior to the line being operational. To complete this scope of works we require access to a bolt, which is situated at the base of the pole. OLE poles on the central reservation, which account for approximately 80% of all poles on the route, have these bolts exposed above ground. In locations where the OLE poles are situated on the footpath, these bolts are below ground and will require the lifting of a slab in order to carry out this test. Once completed, the slab will be reinstated.

Construction Updates

Newhaven to Leith Walk

Newhaven to Melrose Drive

Works are ongoing within this section. We will be installing new streetlights between Hawthornvale and Sandpiper over the coming weeks.

Melrose Drive

Main infrastructure works are ongoing in this area ahead of hard landscaping and surfacing works. To accommodate this further traffic management changes will be implemented in the coming weeks. Further details will be available in due course.

Ocean Terminal

Hard landscaping continues on the eastern carriageway heading south towards the Holiday Inn. Fence lines have been removed from the north side of Ocean Drive following completion of main infrastructure works.

Traffic Management arrangements at Ocean Terminal south roundabout are being managed under 4-way controlled temporary traffic lights. We are aware of a build-up of traffic in the area during peak times and continue to monitor this area.

As part of final surfacing works at the south round about there will be further traffic management changes in the coming weeks which will be communicated via the project's communication channels.

JC Decaux have installed bus shelters on both east and west sides of the street.

Temporary traffic management arrangements remain in place at the north roundabout at Ocean Terminal.

Rennie's Isle to Tower Place

Hard landscaping works are ongoing with surfacing works scheduled in the coming weeks. To accommodate this work there was traffic management change within the area from Monday 23 January 2023. [View the updated Rennie's Isle to Tower Place traffic management plan.](#)

Stevedore Place

The east entrance to Stevedore Place will close from w/c 23 January 2023 to allow works to take place. Entrance to Stevedore Place will be via the west entrance. Main pedestrian diversion remains in place via Tower Street.

Constitution Place to Baltic Street

The reinstatement of the setts at Tower Street are ongoing and are scheduled to be completed in the coming weeks. [Further details can be viewed on the project website.](#)

Surfacing works at the entrance to the Tower Street Industrial Estate have been completed and further surfacing works are expected to take place at the Tower Street junction during February 2023.

Baltic Street to Queen Charlotte Street

Vehicles can now access this section, travelling in both directions.

Tram stop fit out works continue.

Parking enforcement is now in operation in this section.

Queen Charlotte Street to Coatfield Lane

Parking enforcement is now in operation in this section.

Coatfield Lane to FOTW

Works on the South Leith Parish Church (SLPC) wall are ongoing.

Footpath and landscaping works are continuing.

Leith Walk

Two-way traffic is scheduled to be in place for the full length in the coming weeks with further information issued in due course. Prior to two-way traffic returning there will be changes to traffic management arrangements in the area, including the closure of Kirk Street with access being maintained to properties via Casselbank Street. Further information will be provided via the project's communication channels.

Foot of the Walk to Manderston Street

In order to carry out final surfacing works at the Foot of the Walk junction, temporary traffic management arrangements will be put in place between 26-29 January 2023. In addition, the permanent traffic lights will become operational.

Temporary loading / unloading provision is located between Crown Place and Crown Street on the east side of Leith Walk for businesses in the area.

Footpath works are ongoing west side between Foot of the Walk and Jane Street.

Manderston Street to Balfour Street

Main infrastructure and hard landscaping works are progressing on the east side of Leith Walk between 165 Leith Walk and Jameson Place.

Balfour Street to Pilrig Street

Main construction is now completed and the majority of heras fencing has been removed from Pilrig Street to Jameson Place.

Traffic heading south is now crossing over from the west side to the east side of Leith Walk, north of the Balfour Street junction. Vehicles will continue to be able to exit Balfour Street and turn right heading south.

Please note, the carriageway on the west side from Pilrig Street to Balfour Street is closed to vehicles with access to Arthur Street via Balfour Street.

Temporary loading / unloading provision is located on the central reservation on the east side of Leith Walk for businesses in the area.

Pilrig Street to Annandale / Montgomery Street

The Brunswick Street / Leith Walk junction remains closed until further notice.

Albert Street is closed again at its junction with Leith Walk following the Christmas period due to ongoing Scottish Water works which are not related to the project.

York Place to London Road

The London Road junction has now reopened. Please note:

a) There is now no left turn from Leith Walk into London Road. Traffic coming from Leith Walk wishing to access London Road should do so via Picardy Place and then turn right onto London Road. The project installed CCTV cameras in December to monitor and further traffic signage will be installed. In addition, we have installed bollards and will continue to monitor the situation.

b) There is no right-hand turn from London Road onto Leith Walk. Traffic coming from London Road wishing to access Leith Walk should turn left and go via Picardy Place before heading straight onto Leith Walk.

Support for Businesses

A Support for Business package, is available to businesses on the route. [More information can be found on the project website.](#)

Itison

Please, note that the Itison voucher scheme is now closed. Thank you to all businesses and consumers who took part. Over 31,000 vouchers were sold that generated almost £300,000 of spend in participating businesses.

Small Business Spotlight



Tell us a bit about your business

Griffen Fitness was established in 2005, teaching people how to get fit without a gym. We've had the studio on the corner of Balfour Street since 2010 and specialise in teaching exercise that can be done with minimal equipment... and maximal results. I live locally and am a regular columnist for The Leith magazine – you'll often see me out and about with my studio assistant, Coco the fitness pug (find Coco on Instagram). We also hire out the space for pop-up shops on the weekend.

What makes your business unique?

Griffen Fitness is as unique as the clients we train. I teach mainly individual clients (or couples) of all ages and abilities, including disabled and elderly people. Having been a Personal Trainer for over 15 years means that I am confident in designing exercise programmes for those who wouldn't feel comfortable in a gym.

We offer exceptional customer service as we're dedicated in helping our clients enjoy exercise and see the benefits of being more active. 'Get Fit and Enjoy It' my ethos and the title of my new book, a step-by-step guide teaching you how to get fit from home. I wrote it in the first lockdown when my studio was shut down, for a potential second lockdown, and for winter too. Get your copy from [here](#).

Describe your typical working day

The only constant to my working day is a morning walk with Coco the fitness pug. After stretching our legs, the workday begins. Every day is different, as we teach a combination of webcam workouts (online), studio sessions and outdoor fitness. Living locally means we don't need to spend all day in the studio and Coco and I pop home for a sit-down lunch and can often be spotted in a local park teaching fitness.

Why Leith?

Why not? Leith is a fab place to run a business as there are so many other small businesses close by. There is a real community vibe, and the 'I Love Leith' Facebook page is both entertaining and informative.

I don't drive, so living and working within walking and cycling distance to town and shops is essential.

Name three fellow Leith Businesses you love to visit

Leith Market: the best market around is our regular Saturday walk. They stock my new book in their 'click and collect' service and do a lot of good things for the community.

Tattie Shaw's: Technically not Leith but it is my favourite grocery shop at the top of Leith Walk. Owner James knows his onions, and like Griffen Fitness, he has been trading for a long time. Coco also loves getting treats when she visits.

Leith Walk Police Box: Fabulous local pop-up shops and new businesses pop up halfway down Leith Walk. The Police Box is where you'll catch the newest traders in Leith, and find out local community information.