



Call to Artists

Commissioning Document 2022



Commission for permanent statue of Dr Elsie Inglis on the Royal Mile in Edinburgh, Scotland, UK

'A Statue for Elsie Inglis' (SCO charity number 051749) was set up to commemorate the life and work of Dr Elsie Inglis - pioneering physician and surgeon, ardent Suffragist, campaigner for women's medical education and founder of the WW1 Scottish Women's Hospitals (SWH).

The 'a life-and-a-tenth' size bronze statue of Dr Inglis will be sited on the Royal Mile at 219 High Street, Edinburgh EH1 1PE (what3words ///degree.chill.juices.)

Purpose:

- To commission a new piece of public art of a statue to memorialise Dr Inglis as a significant contributor to Edinburgh's heritage and history.
- To raise awareness of Dr Inglis, celebrating her life and work, at home and abroad.

This is an open call for artists to submit their proposals before midnight on **08 October 2022**.



The artwork will:

- Be a life to life-and-a-tenth size figurative sculpture of Elsie as an adult.
- Be in bronze. A contract has already been agreed by the Charity 'A Statue for Elsie Inglis' with Powderhall Bronze Foundry, [Powderhall Bronze Foundry](#), based in Edinburgh to make the statue using traditional lost wax casting techniques with modern materials. cost will be paid directly to the Foundry and is not included in the artist's fee.
- Allow everyone to engage directly with her, the public around her being drawn in and wanting to find more.
- Not feature water or sound.
- Not pose a risk to public safety.
- Not have removable or working parts.
- For shortlisted artists information only: a school's competition will be taking place in the City of Edinburgh during Autumn 2022 to design the statue: pupils will be asked to draw a sketch of what they think the statue of Dr Elsie Inglis should look like. Winner will be announced on Friday 02 December. The winning sketch information will then be available to the shortlisted artists.

The artwork may

- Incorporate a quotation from Elsie Inglis that sums up her life and work.

Key Dates:

28 July 2022

Open call to all artists

08 October 2022

Deadline for all statue proposals to be received before midnight

01 November 2022

Announcement of three shortlisted statues and commissioning of maquette

tbc April 2023

Three selected artists will be invited in person to Edinburgh to discuss their proposal and bringing their maquette to the interview

25 April 2023

Announcement of winning design

November 2024

Statue unveiling

About Elsie Inglis

Born in India in 1864, Elsie moved back to Edinburgh with her family aged fourteen. Elsie attended school at Edinburgh Educational Institution for Girls later to be incorporated into The Mary Erskine School.

In 1887, Elsie enrolled at the Edinburgh School of Medicine for Women, but, after regularly disagreeing with their uncompromising ways, she left and founded her own college, the Edinburgh College of Medicine for Women.

In 1892 she qualified as a licentiate of both the Royal College of Physicians and Surgeons, Edinburgh, and the Faculty of Physicians and Surgeons of Glasgow, becoming one of Scotland's first female doctors. Throughout her career, she focused on improving treatment of

female patients. In Edinburgh, she not only opened a medical practice, but also an independent maternity hospital 'The Hospice' for women and their babies who were too poor to pay. Elsie regularly waived fees owed by her patients, and she was also known to occasionally pay for her patients to recuperate by the seaside.

Elsie was an exceptional member of the Scottish Federation of Women's Suffrage Societies, pushing not only for votes for women but for equal rights for education and medical careers, travelling widely across the UK to speak on their behalf.

When World War 1 began in 1914, Elsie seized her chance to promote women's involvement in the war effort. This was met with contempt after her initial



approach to the War Office, Elsie was famously told to "GO HOME AND SIT STILL." Undeterred, Elsie campaigned and raised the equivalent of over £50 million pounds by the end of WW1, with the generous support of the public both here and abroad.

She set up 26 all women medical units for the Scottish Women's Hospitals (SWH) in 11 war affected countries. The first SWH opened in France at Royaumont near Paris in January 1915. Over 1,000 women from many different backgrounds and countries served with the SWH. Some women joined because it was one of the few opportunities open to women to actively help the war effort whilst for others it was the rare chance for adventure. The Scottish Women's Hospitals were very closely associated with Serbia and although they operated

hospitals in France, Macedonia, Greece, Corsica, Romania and Russia, most of her work was to help her "beloved" Serbians.

She was the first woman to be awarded the Order of the White Eagle, the highest honour given by Serbia.

Elsie died in 1917 aged 53 years. Her life and future cut short by cancer. Her funeral was held at St Giles Cathedral, and she was buried with military honours. Her coffin travelled through the Edinburgh streets lined with crowds. At the service there were representatives from members of both British and Serbian royalty, the Foreign Office, the War Office, the Admiralty, different bodies of women workers, the Suffrage cause, the medical world, the Serbians, and children. She is buried in the Dean Cemetery, Edinburgh.



Elsie's characteristics

Early years

"I always think a very characteristic story of Elsie is her asking that the school might have permission to play in Charlotte Square Gardens. In those days no one thought of providing fresh-air exercise for girls except by walks, and tennis was just coming in. Elsie had the courage (to us schoolgirls it seemed extraordinary courage) to confront the three Directors of the school and ask if we might be allowed to play in the gardens of the Square. The three Directors together were to us the most formidable and awe-inspiring body, though separately they were amiable and estimable men!

"The answer was, we might play in the gardens if the residents of the Square would give their consent, and the heroic Elsie, with, I think, one other girl, actually went round to each house in the Square and asked consent of the owner. In those days the inhabitants of Charlotte Square were very select and exclusive indeed, and we all felt it was a brave thing to do. Elsie gained her point, and the girls played at certain hours in the Square till a regular playing-field was arranged

During her life

"Alongside all the energy and force of Elsie's character there were great depths of tenderness. "Nothing like sitting on the floor for half an hour playing with little children to prepare you for a strenuous bit of work," was one of her sayings.

Those who worked with her point again and again to a characteristic that distinguished her all her life—her complete disregard of the opinion of others about



herself personally, while she pursued the course her conscience dictated, and yet she drew to herself the affectionate regard of many who knew her for the first time during the last three years of her life.

A Serb orderly expressed his devotion in a way that Dr Inglis used to recall with a smile: "Missis Doctor, I love you better than my mother, and my wife, and my family. Missis Doctor, I will never leave you."

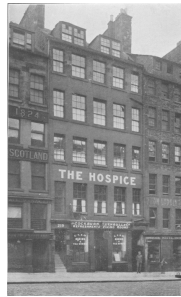
And a soldier from Russia said of her: "She was loved amongst us as a queen and respected as a saint."

Of her work as an operator and lecturer, two of her colleagues say:

"It was a pleasure to see Dr Inglis in the operating-theatre. She was quiet, calm, and collected, and never at a loss, skilful in her manipulations, and able to cope with any emergency."

"As a lecturer she proved herself clear and concise, and the level of her lectures never fell below that of the best-established standards. Students were often heard to say that they owed to her a clear and a practical grasp of a subject which is inevitably one of the most important for women doctors."

Source: 'Elsie Inglis The Woman with the Torch' by Eva Shaw McLaren



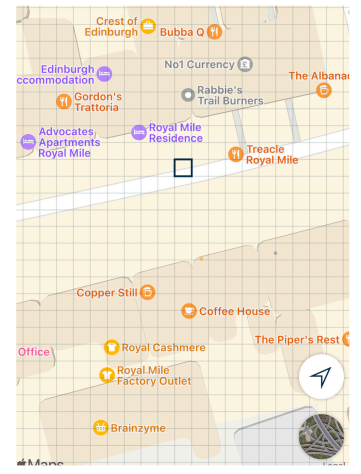
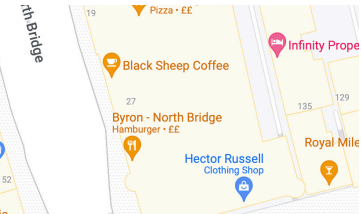
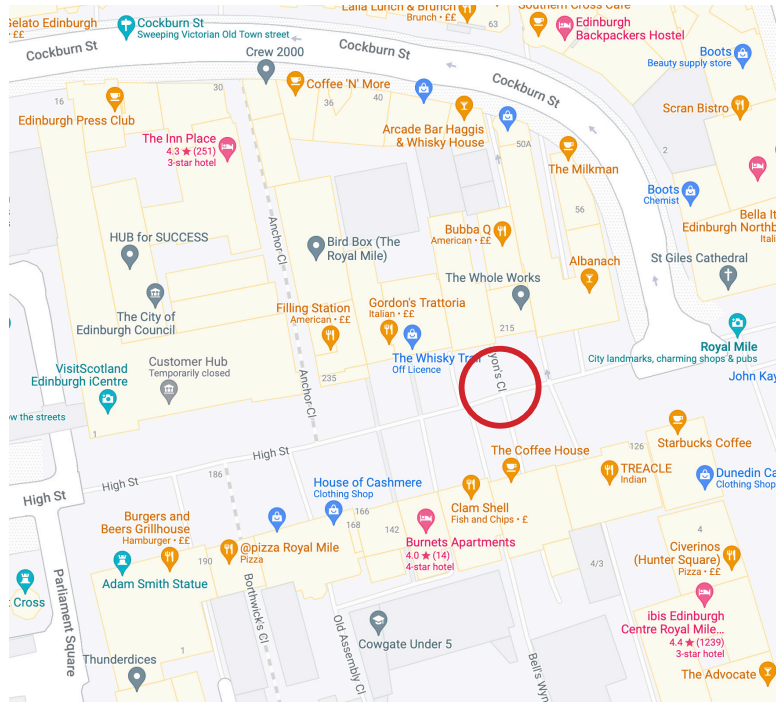
Location

On the Royal Mile, Edinburgh at 219 High Street, Edinburgh EH1 1PE (**what3words ///degree.chill.juices.**) We highly recommend visiting this location in person as it is on a slope. The double rubbish bin will be moved by City of Edinburgh Council transport department and re-positioned a good distance from the site of the statue.

In 1904, Dr Elsie Inglis opened a hospital known as The Hospice at this site for the city's poorest women and children, run by an all women team.

An application for planning permission and location plan will be submitted by the charity 'A Statue for Elsie Inglis.' The chosen artist's concept proposal documents must be suitable for inclusion in the final planning application. The artwork must follow City of Edinburgh Council guiding principles 'Edinburgh Design Guidance refer to pages 40 – 42.

The commissioned artist will be required to demonstrate appropriate levels of public, employers and professional indemnity insurance and appropriate risk management plans. We will need to see evidence of this from the artist.





Artist Selection Process

Budget

The budget for the artist's fee is **£30,000 including VAT** and all travel expenses.

Artist Selection Process.

The artist will be appointed through a longlisting/shortlisting process followed by an in-depth interview process with the Selection Panel.

Stage 1 – Expressions of Interest

Artists are invited to submit the following information before midnight on 08 October 2022.

1. A covering letter stating why they are interested in the commission.
2. A one-page Word document explaining how the design fulfils the Brief (see 'Purpose' and 'Criteria' above.)
3. Sketches of ideas for a visual interpretation of the proposed design.
4. Artist CV + link to website.
5. Links to share up to 3 photographic images of previous public work of sculptures or statues.

Stage 2 – Shortlist

The selection panel will shortlist three artists.

Three shortlisted artists will be given a development fee/honorarium of £2000 including VAT and all travel expenses. Half on commission and half on delivery of the maquette (35cm high) made from a hard/durable material e.g. plaster/resin/ clay and that can be exhibited in an indoor space.

Shortlisted artists will be invited to attend interviews with their maquette and meet the Selection Panel in April 2023 (date tbc) and share their vision and creative process. They will be given the opportunity to present their written narrative outlining ideas, design rationale, research and key concepts associated with the artwork, and its appropriateness for the location.

Following these interviews, the Selection Panel will make their final selection and appoint an artist. The Selection Panel's decision will be final. The Selection Panel reserves the right not to commission any of the designs. Written feedback will be offered to the unsuccessful shortlisted artists.

A contract will be prepared with the artist and payments will be made in 3 phases, based on the progress of the stages agreed of the statue development.

The winning maquette will be owned by the charity 'A Statue for Elsie Inglis' The commissioned artist must agree to the production of a limited edition set of maquettes. All funds raised by the sale of the maquettes will support the legacy and future maintenance of the statue on behalf of the charity 'A Statue for Elsie Inglis'



Key aspirations for the Elsie Inglis Statue

This is the first woman statue on the Royal Mile, it represents a valuable step forward in acknowledging the women who have made Edinburgh the city it is today. We believe Elsie is possibly one of the most outstanding women in Scottish History.

The location, on the Royal Mile, is at the heart of Edinburgh's Old Town. The statue will raise awareness of Elsie Inglis and build a community pride in her outstanding legacy, for locals and for

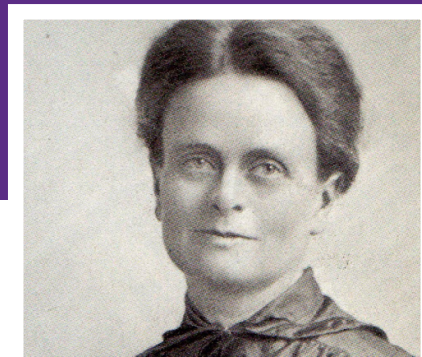
visitors to see. Her vision and ideas were far ahead of her time. She is an incredible role model for young people, her life and work will empower and inspire future generations.

This piece of public art will match the importance of her work and all that Elsie achieved and everything she stood for, adding to the narrative and character of the Royal Mile, and highlighting the role that women have played in Edinburgh's history.

WHY WE FIND ELSIE SO INSPIRING?

Members of the team 'A Statue for Elsie Inglis' have created a word cloud inspired by our collective thoughts to describe Elsie and our vision for the statue.

brave
active warm
feminist
persistence
visionary integrity
selfless leader energy
caring
pioneer calm
loving
adventurer warm
inspirational
courageous
pragmatic dynamism dignified
engaging
resolute
powerful
tender



CONTACT DETAILS

Email Address for submissions and/or enquiries: admin@elsieinglis.org

Mailing Address for submissions

Elsie Inglis Submissions, 48 Manor Place, Edinburgh EH3 7EH

FURTHER RESOURCES:

The Royal College of Physicians Edinburgh: <https://www.rcpe.ac.uk/heritage/college-history/elsie-inglis>

The Royal College of Surgeons Edinburgh: <https://archiveandlibrary.rcsed.ac.uk/special-collections/scottish-womens-hospitals-for-foreign-service/elsie-inglis-letters-and-examination-papers>

The Lancet: [https://www.thelancet.com/journals/lancet/article/PIIS0140-6736\(14\)62022-5/fulltext](https://www.thelancet.com/journals/lancet/article/PIIS0140-6736(14)62022-5/fulltext)

Imperial War Musuem: <https://livesofthefirstworldwar.iwm.org.uk/lifestory/4959748>