

Five things you need to know today

This week at the City Chambers

Monday, 27th January, 2025

- [9.30 am – 3.00 pm Licensing Sub-Committee27/01](#) – Dean of Guild Court Room – City Chambers

Tuesday, 28th January, 2025

- [9.30 am – 2.30 pm Licensing Sub-Committee28/01](#) – Dean of Guild Court Room – City Chambers

Wednesday, 29th January, 2025

- [9.30 am Planning Local Review Body \(Panel 1\)29/01](#) – Dean of Guild Court Room – City Chambers
- [10.00 am Education, Children and Families Committee29/01](#) – Virtual Meeting – via Microsoft Teams
- [2.00 pm Planning Committee29/01](#) – Dean of Guild Court Room – City Chambers

Thursday, 30th January, 2025

- [10.00 am Transport and Environment Committee30/01](#) – Dean of Guild Court Room – City Chambers

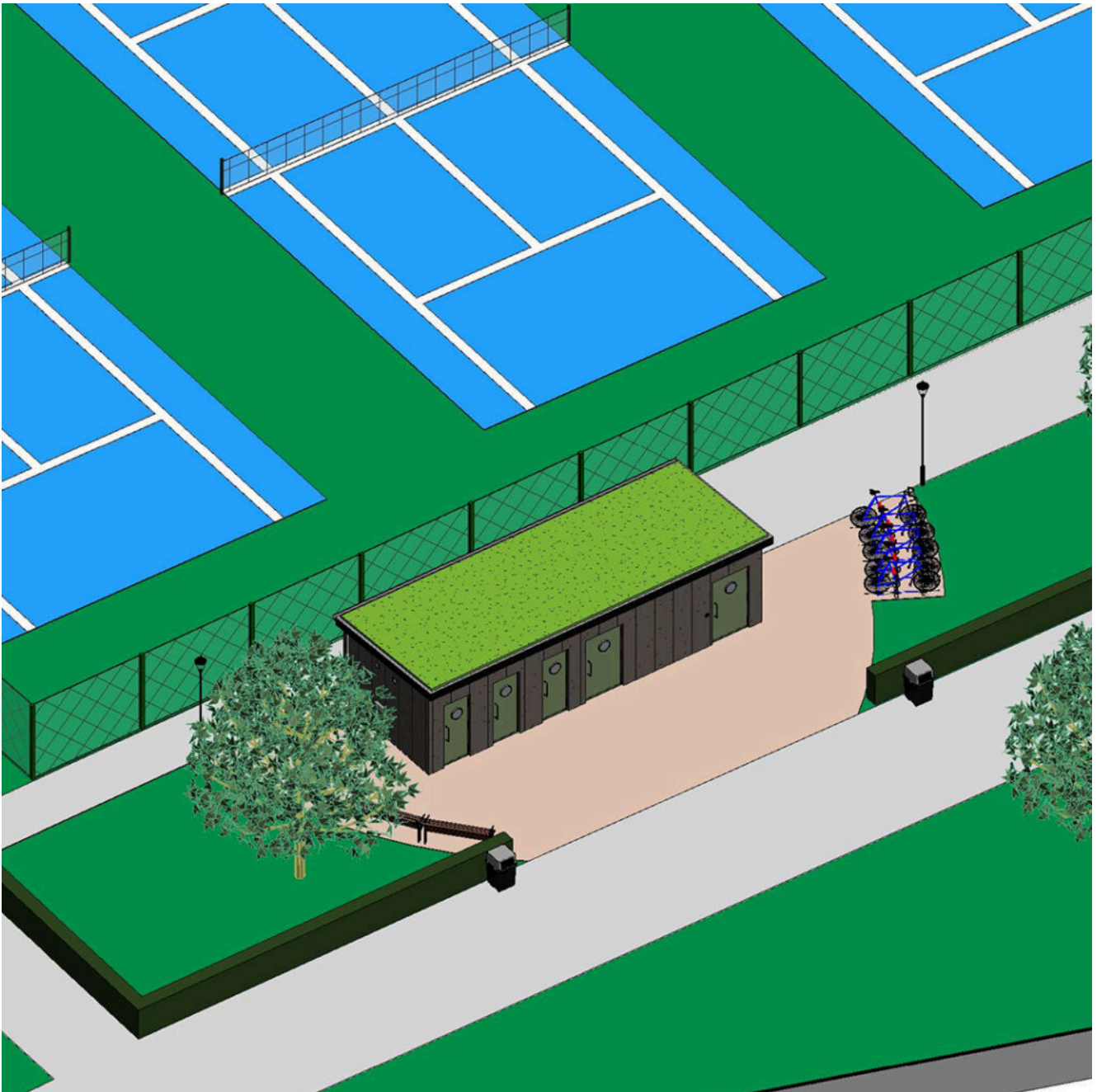
Friday, 31st January, 2025

- [10.00 am – 2.00 pm Regulatory Committee31/01](#) – Dean of

Guild Court Room – City Chambers

One of the matters to be considered by the Transport and Environment Committee on Thursday is the petition to the council to set up a bus service to the Edinburgh International Climbing Arena. [More details here.](#)

Leith Links Activity Park



The landscape layout has been published for the new public loos which will be installed in Leith Links. This is part of

the Public Toilets in Parks project according to Leith Links Activity Park – a Facebook group which is leading on the plans. It is hoped to install the new public toilets by the end of May.

Critical Mass

If you are interested in joining the Critical Mass cycle rides in Edinburgh this is the full schedule to put in your diaries for the year ahead.

Edinburgh Critical MASS!

A Big Fun Community Ride for Everyone!

Reclaiming Space for Safe Cycling
Advocating for Better Bike Infrastructure
Making a Greener World

Last Saturday of Every Month
Starting 2pm at Middle Meadow Walk

2025 Rides!

25th January + 22th February
29th March + 26th April
31st May + 28th June
26th July + 30th August
27th September
25th October
29th Novembrrr



£1 tickets to the Palace of

Holyroodhouse

For 2025, a new scheme of £1 tickets, which are available to those receiving Universal Credit and other named benefits, has begun at the Palace of Holyroodhouse, initially available **between 1 January and 4 April 2025**.

Those eligible can bring up to five members of their household along with them to explore the Palace for £1 each. The scheme is part of Royal Collection Trust's charitable aim to find welcoming and inclusive ways for everyone to enjoy the Palaces and the Collection.

It was first launched in 2024 at The King's Galleries in Edinburgh and London, which will continue to offer £1 tickets for exhibitions in 2025. Tickets are on sale now.

In addition to £1 tickets, a range of concessionary rates will continue to be available. These include half-price entry for children and discounts for young people, while visitors who purchase standard tickets directly from Royal Collection Trust can convert them into a 1-Year Pass, allowing free re-entry for 12 months.

There is already a similar scheme in place for visitors to see the paintings and artwork in The King's Gallery for £1 on the same basis. The next exhibition Royal Portraits – A Century of Photography opens on 28 February.



The Royal Dining Room at the Palace of Holyroodhouse.

Credit: © Royal Collection Enterprises Limited 2024 | Royal Collection Trust. Photographer: Peter Smith.

Scotonomics

Sign up now for a festival of economics to be held in March at Leith Dockers Club with Ivan McKee MSP and Minister for Public Finance. Click on the image below.



SCOTONOMICS

FESTIVAL OF ECONOMICS

Leith Dockers Club
20 March • 19.30 - 22.15

Brett Christophers, Professor of Human Geography at Uppsala University
and author of 'The Price Is Wrong' and 'Our Lives In Their Portfolios'
Ivan McKee MSP, Minister for Public Finance, Scottish Government
William Thomson, Political Economist and Founder, Scotonomics
Chaired by Laura Webster, Editor, The National

SESSION ONE: DEMYSTIFYING OUR ECONOMY

**SESSION TWO: ECONOMICS OF SCOTTISH
INDEPENDENCE**

Tickets £15 and more information
www.scotonomics.scot/event



The tallest tree in the Royal Botanic Garden Edinburgh has been damaged beyond recovery PHOTO courtesy of RGBE