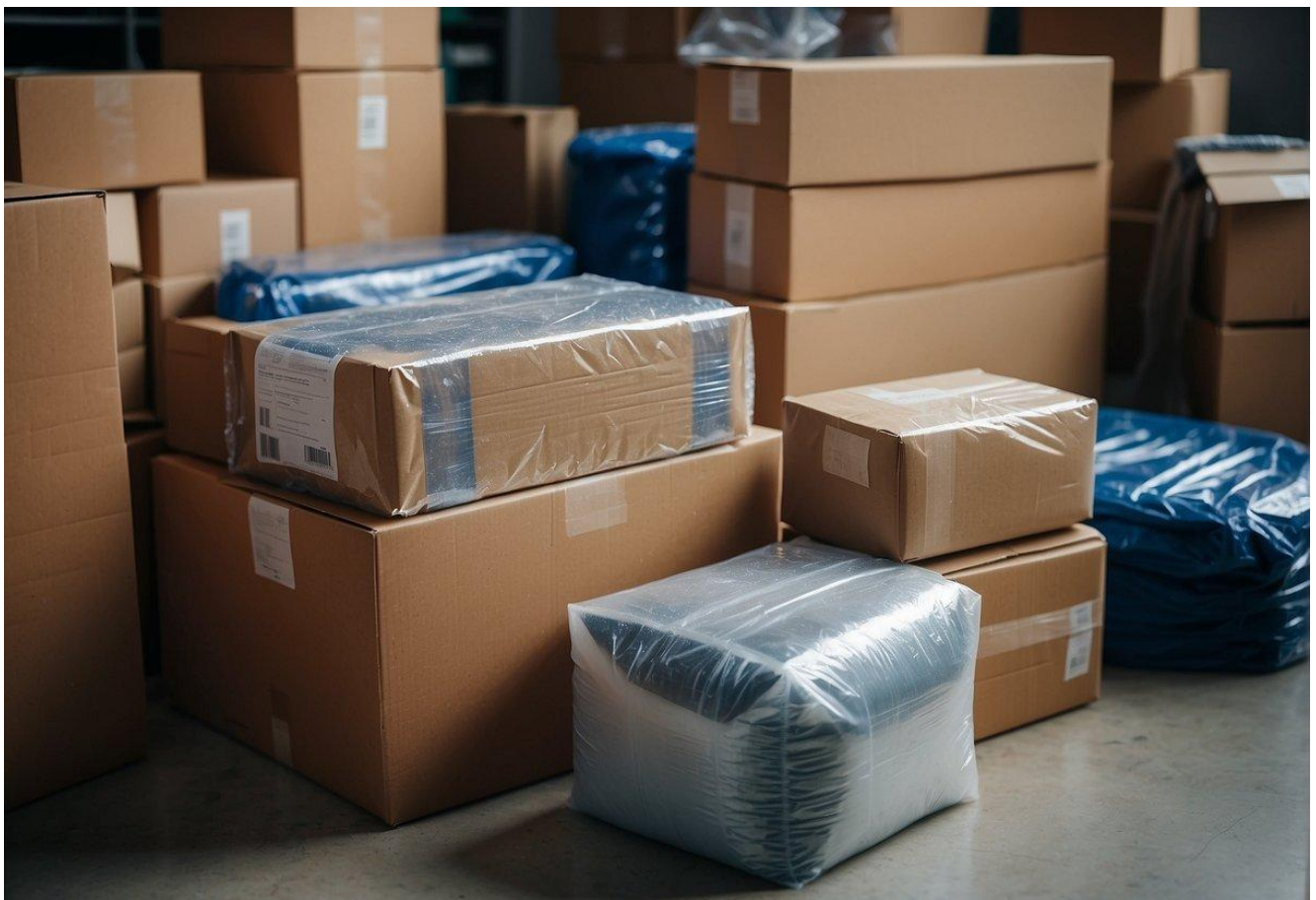


# How to Keep Belongings Safe During Move: Proven Strategies for a Secure Transition

Moving to a new home is often an exciting journey, but it also comes with the challenge of ensuring that one's personal possessions arrive safely when working with [moving companies](#). The protection of valuables, heirlooms, and even the most mundane of items is paramount during this transition. Without adequate preparation and safeguarding measures, belongings can be damaged, lost, or even stolen. Thus, a systematic approach to securing items can make the difference between a smooth relocation and a problematic one.



People who are relocating can take several steps to keep their belongings secure. Creating a detailed inventory list before

the move provides a clear record of items and helps in keeping track of possessions throughout the moving process. Additionally, utilizing proper packaging materials and techniques is crucial; items should be securely wrapped and padded to prevent damage during transportation. Furthermore, investing in moving insurance offers financial protection against potential losses.

The safety of possessions during a move is enhanced by being attentive to security at every stage. This involves not just the careful packing of items, but also measures like using quality locks for the moving truck and considering tracking devices for high-value items. These strategies, when implemented effectively, can greatly reduce the risk of loss and provide peace of mind during what can often be a hectic time.

## **Planning Your Move**

A successful move hinges on foresight and organization. Creating a meticulous inventory and selecting a reputable moving company are integral steps in safeguarding one's belongings throughout the relocation process.

## **Creating an Inventory List**

One begins the moving process by compiling a complete inventory list of their belongings. This serves dual purposes: enabling one to keep track of all items and assisting in the event that an insurance claim needs to be filed. The inventory should be categorized by room and itemized for precision. For example:

### **▪ Living Room**

- 1 large sectional sofa
- 1 coffee table
- 1 55-inch television

- **Kitchen**

- 1 refrigerator
- 1 microwave
- 1 set of pots and pans

This detailed list should be backed up digitally or kept in hard copy as a fail-safe against potential loss or damage during the move.

### **Choosing the Right Moving Company**

Securing a reputable moving company is essential; they not only transport physical items but are also guardians of one's possessions during a vulnerable time. Researching and selecting a moving company that is both licensed and insured is paramount. It is advisable to read customer reviews and verify the company's record with the Better Business Bureau. One should obtain written estimates from multiple companies to ensure transparency and avoid unexpected costs. A trustworthy mover should provide a clear contract outlining all services and insurance coverages.

Each step in planning a move, from inventory management to securing a reputable moving company, contributes significantly to the relocation experience.

### **Packing Strategies**



Effective packing is crucial for the safety of belongings during a move. Employing the right materials, techniques for wrapping fragile items, and a comprehensive labeling system ensures a secure transition to a new location.

### Using the Proper Materials

A mover must select high-quality, sturdy **moving boxes** in various sizes to accommodate different types of items. Utilize **packing paper** and [bubble wrap](#) for cushioning and protecting items inside the boxes. Securing boxes with heavy-duty **packing tape** is essential to prevent them from opening during transit.

- **Moving Boxes:** Choose small, medium, and large sizes.
- **Packing Paper:** For wrapping and padding items inside the boxes.
- **Bubble Wrap:** Essential for items that need extra protection.
- **Packing Tape:** Reinforce the bottom and tops of boxes.

## Protecting Fragile Items

Fragile items require special attention. Wrap each fragile piece individually with **bubble wrap** or **packing paper**. Use additional padding between items and ensure they are snug within the boxes without too much movement to reduce the risk of damage.

- Wrap **fragile items** individually.
- Use extra padding inside boxes.
- Make sure items do not move inside the boxes by filling empty spaces with crumpled packing paper or towels.

## Labeling Your Boxes

Clearly **label** each box with a **marker** to identify its contents and designated room in the new house. This not only helps with organization but also lets movers handle boxes containing fragile items with extra care.

- Label content and room destination.
- Use a bold **marker** for visibility.
- Mark "FRAGILE" where applicable.

## Securing Valuables





When moving, safeguarding valuables is a crucial task. The measures taken should both prevent damage and deter theft, ensuring valuable possessions arrive safely at their destination.

### **Special Care for High-Value Items**

**High-value items** such as jewelry, antiques, and important documents require special attention. They recommend individually wrapping each item with appropriate materials, such as bubble wrap or padded envelopes, to protect against [physical damage](#). For added protection, consider using hard-shell cases for particularly fragile items. It is wise to transport these valuable possessions in a **personal vehicle** if possible, keeping them in one's sight at all times.

For items of significant financial or sentimental value that are too large to carry personally, using a **storage unit** with robust security measures is advised. These units should feature:

- **Climate control:** to protect against environmental damage.
- **24-hour monitoring:** via cameras and alarms.
- Strong access control measures, like personalized key codes or biometric scanners.

## Utilizing Security Measures

Implementing the right security measures can offer peace of mind when transporting valuable items. Experts suggest investing in a **high-quality lock** for the moving truck to secure the contents. Additionally, installing a temporary **security system** in the new residence can protect valuables upon arrival until a more permanent system is in place. Some temporary security measures include:

- Motion-activated alarms.
- Door and window sensors.

For smaller valuables or sensitive documents, using **safes** may be the best option. Safes should be:

- Fireproof and waterproof.
- Secured to a stationary object within the moving vehicle to prevent theft.

**Added security** can also involve using inventory lists to check off items as they are packed and again when they are unpacked, as well as taking photographs of the condition of valuables before the move. This documentation can be useful in the event of loss or damage, especially when dealing with insurance claims.

## Settling Into Your New Location



The critical steps when settling into a new location involve unpacking and rearranging one's possessions and ramping up the security to ensure the safety of their new home. [Attention to detail](#) during this phase can make a house feel like home and secure residents' peace of mind.

## **Unpacking and Organizing**

When **unpacking** furniture and belongings, it's essential to do so methodically. Residents should refer to the inventory list created before the move to ensure all items have arrived safely. It's wise to set up and organize room by room, starting with essentials such as the bedroom and kitchen.

- **Bedroom:** Arrange the furniture and unpack bedding first to ensure a comfortable first night.
- **Kitchen:** Place heavy cookware and frequently used utensils within easy reach.
- **Electronics:** Set up electronics such as televisions and computers, ensuring they are properly connected and



secured.

Small appliances and decorative items should be unpacked last, after the essential furniture and items are settled.

## **Ensuring Safety Post-Move**

Once settled, the security of the new location is paramount.

- **Professional Locksmith:** Engaging with a professional locksmith to change the house locks can prevent unauthorized access.
- **Security System:** Installing a security system or ensuring the one that came with the house is functioning correctly can offer an added layer of protection.
  - **Cameras:** Placement around points of entry for monitoring.
  - **Alarms:** Set up alarm systems and educate all household members on their operation.

Boldly labeling the circuit breaker and showing family members how to shut off utilities in case of an emergency is a recommended safety measure.

Ensuring that furniture and heavy items are stable and secured can prevent accidents, especially in homes with children or pets. Users of the space should familiarize themselves with the neighborhood and local emergency services to round off a comprehensive approach to safety post-move.