

Powering Efficiency: Geomotiv's Solutions for Streamlining Processes

Introduction

In today's fast-paced business environment, organizations are constantly pressured to improve efficiency, save expenses, and optimize operations. Successful businesses know that efficient procedures are essential to their success, and [Geomotiv](#) is a leader in technology solutions. In this in-depth piece, we explore Geomotiv's creative approaches to improving organizational excellence and optimizing workflows.

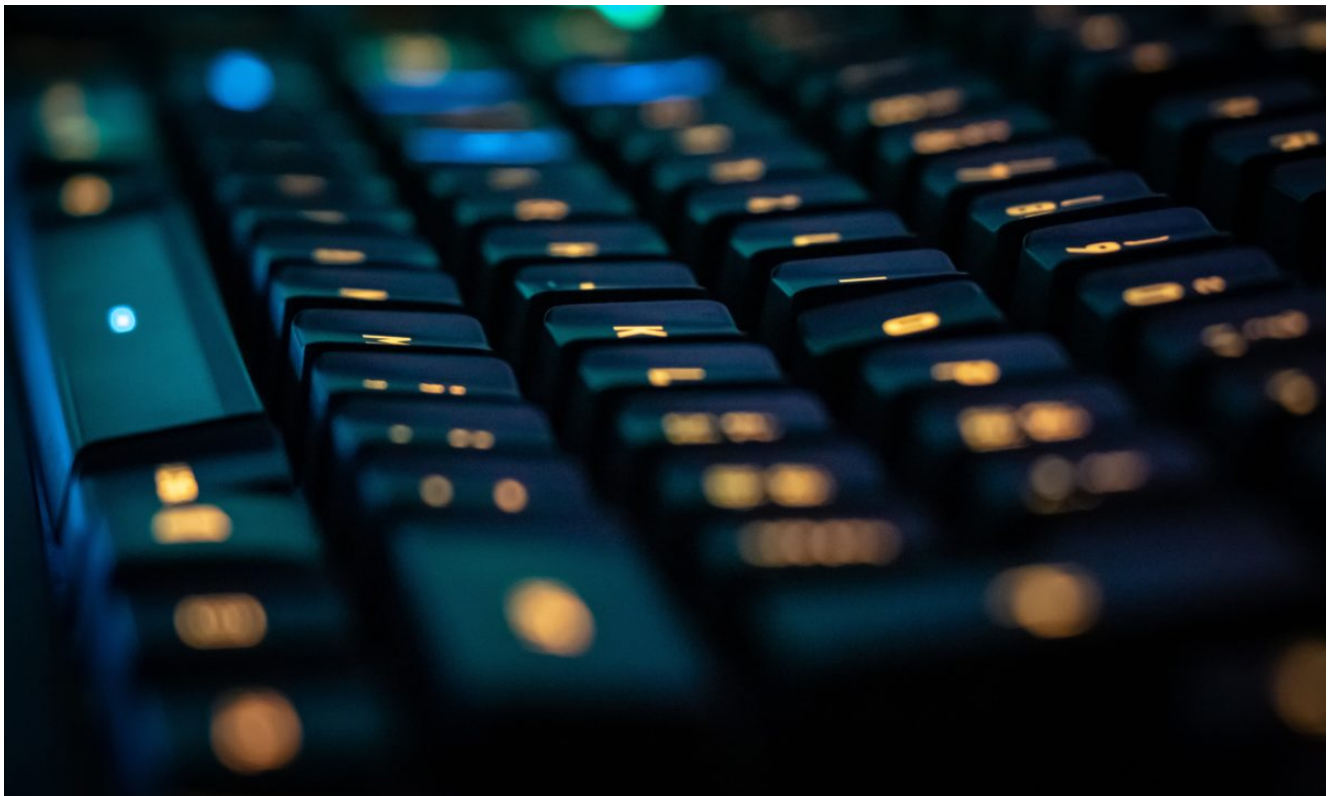


Photo by Florian Krumm on Unsplash

Understanding Streamlining

Simplifying complex processes by removing unnecessary steps or bottlenecks is known as streamlining. The ultimate objective is to maximize productivity, improve organizational effectiveness, and meet key performance indicators (KPIs). The comprehensive approach of Geomotiv takes into account both the human and technological aspects of streamlining.

The Benefits of Streamlining Processes:

1. Improved Efficiency

Efficiency lies at the core of Geomotiv's philosophy. By trimming unnecessary tasks, organizations unlock a cascade of benefits:

- **Cost Reduction:** Streamlined processes lead to lower operational costs.
- **Optimized Staff Time:** Employees can focus on value-added activities.
- **Increased Outputs:** Productivity soars when inefficiencies are eliminated.
- **Enhanced Value Delivery:** Customers receive better service.

2. Boosting Employee Morale

Inefficient workflows frustrate employees. Geomotiv's solutions empower teams to concentrate on strategic work rather than mundane tasks. A content workforce translates to better outcomes and reduced turnover.

3. Preparedness for Innovation and Scaling

A culture of streamlining positions organizations for agility:

- Innovation: Geomotiv ensures that processes remain adaptable to technological advancements.
- Scaling: Whether expanding or responding to market shifts, streamlined workflows facilitate growth.

Challenges in Streamlining Processes

Streamlining procedures presents many obstacles for businesses. Antiquated technology, heterogeneous data sources, and ineffective work processes can impede efficiency and impede organizations from accomplishing their objectives. Geomotiv knows these difficulties and works closely with customers to pinpoint problems and provide specialized fixes.

1. Overcoming the Status Quo

Change management is a formidable challenge. Geomotiv acknowledges that altering ingrained habits across an organization requires cultural shifts and internal champions. However, pushing beyond the status quo is essential for sustained success.

2. Fostering Communication and Collaboration

Departments often operate in silos, competing for resources. Geomotiv emphasizes open dialogue and incentivizes collaboration. When teams communicate effectively, streamlining becomes a collective effort.

Geomotiv's Streamlining Techniques

3. Process Mapping

Process maps are versatile tools employed by Geomotiv across functions. They help organizations gain clarity by visually representing workflow goals, steps, and potential improvements. Process mapping also reveals bottlenecks and streamlines workflows.

4. Automation and Integration

Geomotiv integrates cutting-edge technologies:

- Robotic Process Automation (RPA): Automates repetitive tasks, reducing manual effort.
- Intelligent Data Extraction: Enhances accuracy and efficiency.

5. Data-Driven Decision-Making

Geomotiv leverages data analytics to drive process improvements. Organizations make informed decisions by analyzing performance metrics, identifying patterns, and predicting bottlenecks.

Data Integration and Management

Data integration and management are essential for businesses to harness the power of their data effectively. Geomotiv excels in integrating disparate data sources, cleansing and enriching datasets, and ensuring consistency and integrity. By breaking down silos and implementing robust data management strategies, businesses gain actionable insights for informed decision-making. Geomotiv's data integration and management expertise drive efficiency, innovation, and competitive advantage.

Process Automation

Process automation revolutionizes operations by eliminating manual tasks and streamlining workflows. Geomotiv specializes in custom automation solutions, leveraging cutting-edge technologies like RPA to boost efficiency and accuracy. Businesses can optimize resources, reduce costs, and accelerate growth by automating repetitive processes and orchestrating complex workflows. Geomotiv's expertise ensures seamless automation implementation, driving productivity and innovation.

Cloud Migration and Optimization

Cloud migration and optimization are vital steps for businesses aiming to modernize their IT infrastructure. Geomotiv excels in guiding organizations through this complex process, ensuring a seamless transition and maximum ROI. From migrating legacy applications to optimizing cloud resources, Geomotiv's expertise enables clients to harness the full potential of cloud technology. By leveraging scalable, flexible, and cost-efficient cloud solutions, businesses can enhance agility, improve performance, and drive innovation. Geomotiv's strategic approach to cloud migration and optimization guarantees long-term success in today's competitive landscape, empowering businesses to stay ahead of the curve and thrive in the digital era.

Case Study: Geomotiv's Impact on a Retail Supply Chain

A major retail chain grappled with inventory management and order fulfillment inefficiencies. Geomotiv implemented an end-to-end solution:

- **Inventory Tracking:** Streamlined inventory management;
- **Automated Order Processing:** Reduced delays;
- **Improved Demand Forecasting:** Resulted in reduced stockouts and faster deliveries.

Conclusion

Geomotiv is the catalyst for businesses to unlock unparalleled efficiency and drive sustainable growth. Through tailored software development, seamless data integration, strategic process automation, and expert cloud optimization, Geomotiv empowers organizations to transcend operational limitations and embrace innovation. By partnering with Geomotiv, businesses streamline their processes and gain a competitive edge in today's dynamic market landscape. With a commitment to

excellence and a focus on results, Geomotiv paves the way for transformative change, ensuring that each client achieves their goals with precision and agility. Experience the power of efficiency with Geomotiv today.