

Edinburgh Archaeological Field Society 50th Anniversary exhibition

Edinburgh Archaeological Field Society (EAFS) are pleased to announce the extension to their Exhibition, currently running at the Museum of Edinburgh, until February 20th 2022. It celebrates the 50 years of the Society and shows some of the highlights from digs down the years.

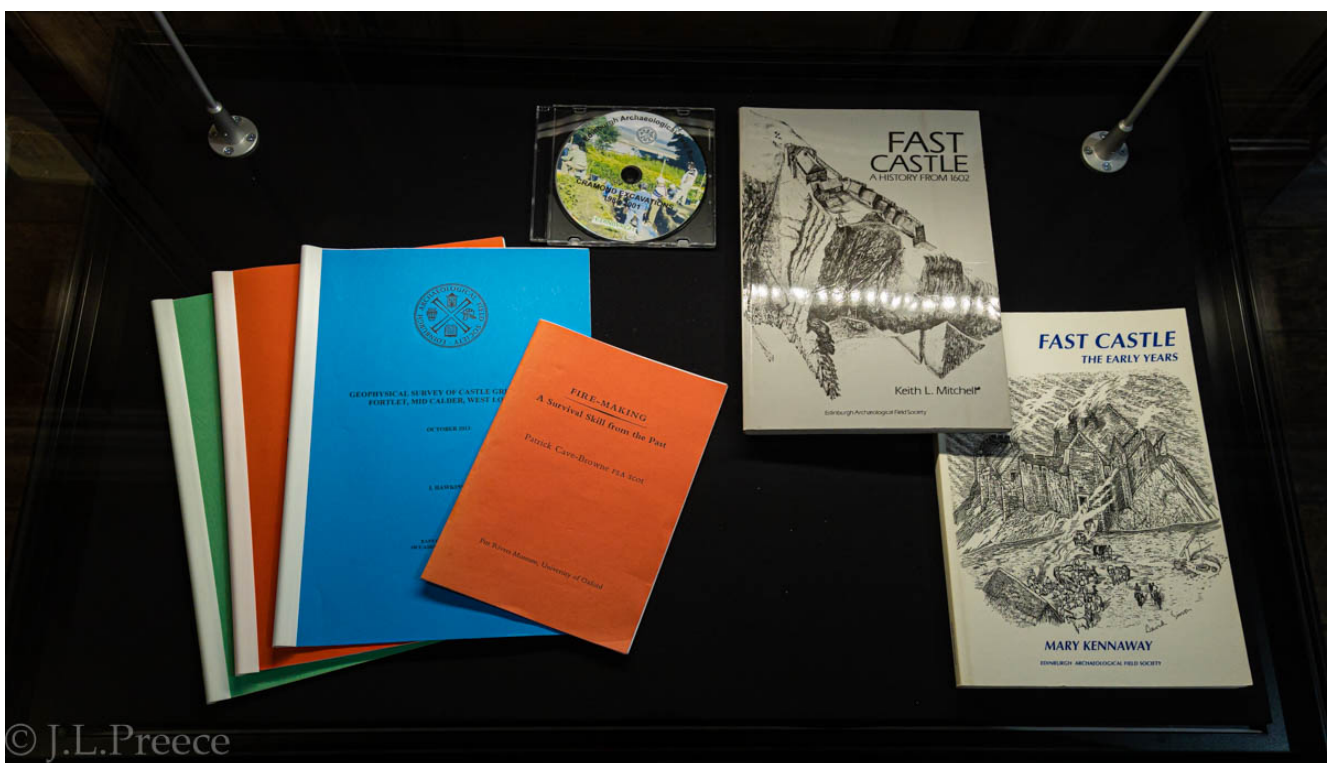


© J.L.Preece



The Society was founded in 1971 and started with a project based at Fast Castle in Berwickshire. This project lasted until 1986 and, as well as some significant finds, it resulted in 3 publications about the excavations and the history.

The significance of the work done at fast Castle led to the society winning the prestigious British Archaeological Awards' Pitt Rivers Award.



Excavations at Cramond were a feature of the Society from 1975 to 2008. They assisted City of Edinburgh Council Archaeological Services, National Museums of Scotland and various commercial archaeological units as well as running

their own excavations.

Most of the Cramond excavations were uncovering the Roman history of the area but an EAFS led excavation from 1988 to 2001 found the remains of the demolished 17th Century village of Nether Cramond as well as Mesolithic features from c8500 BC.



CRAMOND

The historic coastal village of Cramond has and continues to be a focus for the work of the Service. Our work alongside the City of Edinburgh Council Archaeological Service (CESAS) and others has led to increasingly important new discoveries putting Cramond firmly on the map as one of Scotland's oldest and richest archaeological sites.

L...the first archaeological excavations at Cramond were carried out in the 1930s and 1940s. These excavations revealed a wealth of archaeological remains, including a large stone building, a Roman fort, and a medieval church. The site is now a Scheduled Ancient Monument and is protected by law.



"This is the first time since the 1930s that the site of Cramond has been excavated since the 1930s."



www.zsf.org.uk



The EAFS' current project is based on the Estate of Cammo on the outskirts of Edinburgh. This project was started under the auspices of City of Edinburgh Council Archaeological Services and the Forestry and Natural Heritage Service. We have been working there since 2017 and meet there regularly to excavate the upstanding remains of estate buildings including the Walled Garden.

Members also investigate the history of the estate and its previous owners. The informative walks led by Society members have been very successful. The lives of the estate servants have been of particular interest to Society members and the

public. Examples of the evidence we have collected can be found on display in the Exhibition.



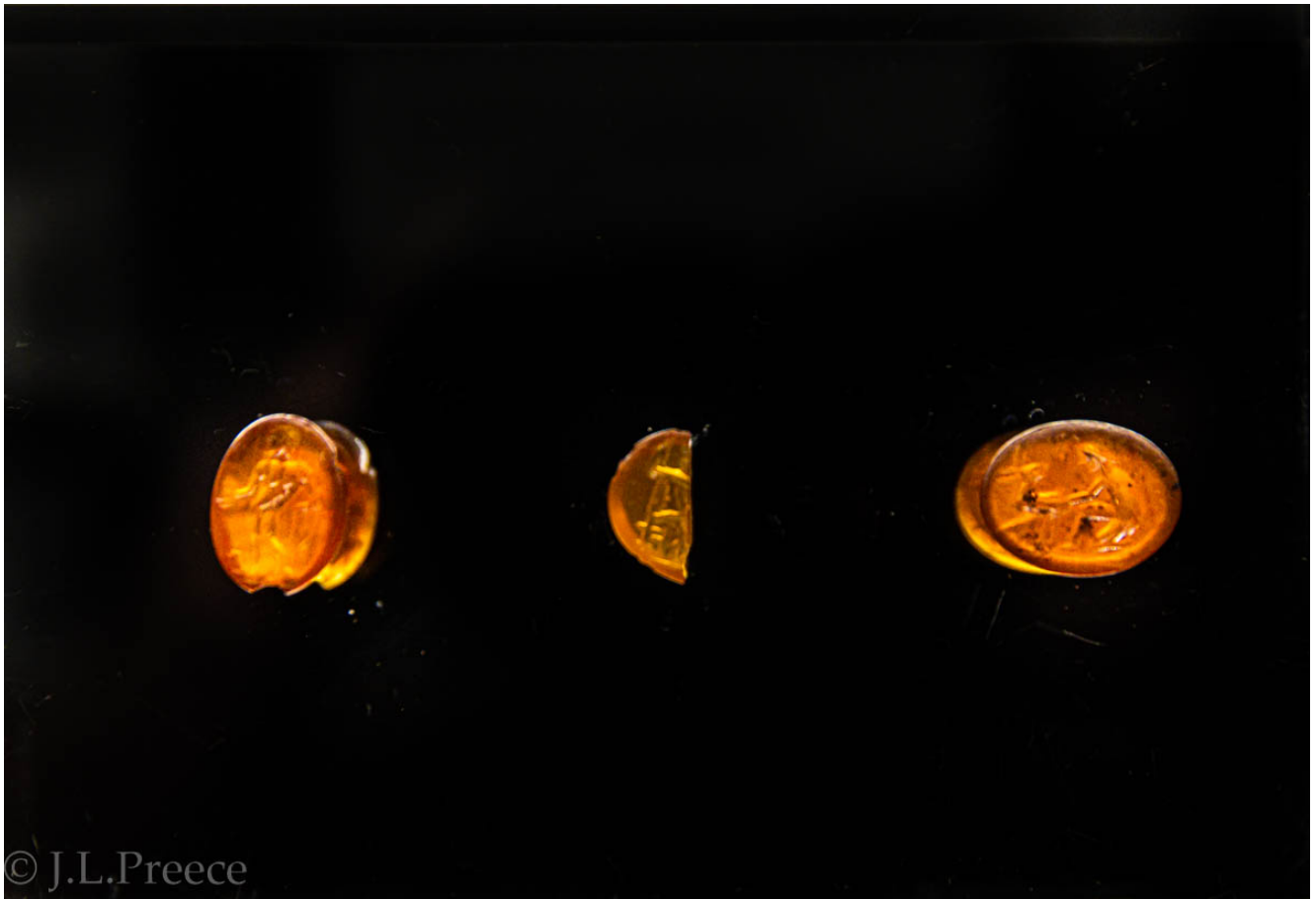


© J.L.Preece

The Edinburgh Archaeological Field Society is a group of interested amateur archaeologists who have a strong emphasis on practical fieldwork and training. It welcomes members of all ages and skill levels. It is involved in geophysical and field surveys, historical research and excavation.



© J.L.Preece



The Society carries out work all over the Central belt of Scotland down to the Borders. If people are interested please visit the Exhibition, visit our website – eafs.org.uk,

Facebook – [Edinburgh Archaeological Field Society](#) and Twitter – @field_society

Our thanks go out to the City of Edinburgh Archaeological Services and the staff of the Museum of Edinburgh for making our 50th Anniversary Exhibition a reality and thanks also to all current and previous members of EAFS.

Thanks to EAFS' Christine McPherson for the above article