

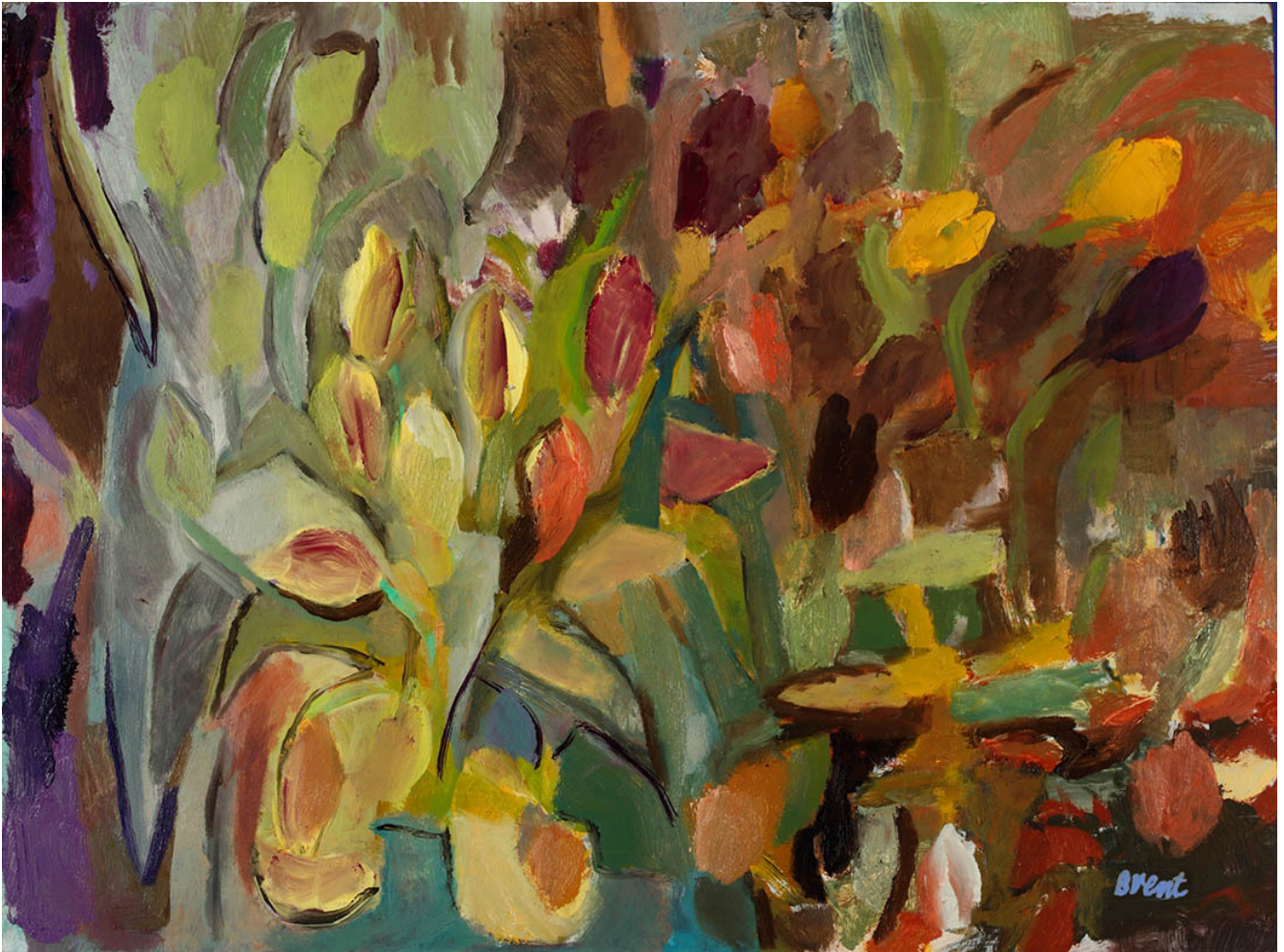
At the Open Eye Gallery – Brent Millar and Marianne Wood

At Open Eye Gallery there are two exhibitions running side by side this month.

Brent Millar *After the Rain* runs until 24 October and shows off work by the Edinburgh-based artist whose inspirations are nature, poetry and music. Millar studied at Edinburgh College of Art where he was taught by Sir Robin Philipson and Dame Elizabeth Blackadder.

Open Eye Gallery say: “Brent creates dreamlike compositions where observation and imagination blur harmoniously. Birds are a unifying theme in his practice, emerging as the symbolic link between music and nature. Starlings, goldfinches, chaffinches and swans repeatedly sweep into his paintings, defined in areas of saturated colour and delineated by bold strokes.

“With a complex palette, the artist layers and re-works his compositions, contrasting areas of chaos with patches of calm. His practice extends into both print and drawing but relies on paint as his medium of choice. The influence of Picasso, Matisse and Francis Bacon permeates his work and an impressionist brushstroke is employed in his vivid flower studies. Not beholden to trend or fashion in contemporary art, Brent has forged his own path to become a respected, sought-after figure in the Edinburgh art scene.”



Step Lightly Oil on Board 46 x 60cm £1800 Courtesy of Open Eye Gallery

Marianne Hazlewood – *Fine Hair Soft Nibs Depictions from a Shady Bed* also runs until 24 October 2020.

New botanical illustrations by the VAS 2019 Open Eye Gallery award winner. Marianne Hazlewood is an RHS and BISCOT Gold award-winning botanical artist. She works with plants, sourcing and growing her subjects to learn their nature before referencing them for her illustrations.



Arisaema costatum Watercolour on Fabriano Image courtesy of Open Eye Gallery

To view the exhibition in person book an appointment [by email](#)

[here](#). In accordance with Government guidelines, all social distancing measures are in place with hand sanitiser at the door upon arrival. Visitors are required to wear face masks. Appointments are available for 30 minute slots, Tues-Fri 11-5 Sat 11-4, one household per appointment.