

# **Open Eye Gallery – open by appointment from 1 July**

**The Open Eye Gallery on Abercromby Place will reopen this week.**

**There are two exhibitions running from 1 – 25 July 2020 which can be viewed either in the gallery or online.**

If you wish to visit the gallery you must contact them ahead of your visit to make an appointment. Physical distancing measures will be in place with hand sanitiser at the door. Visitors will also be asked to wear face coverings.



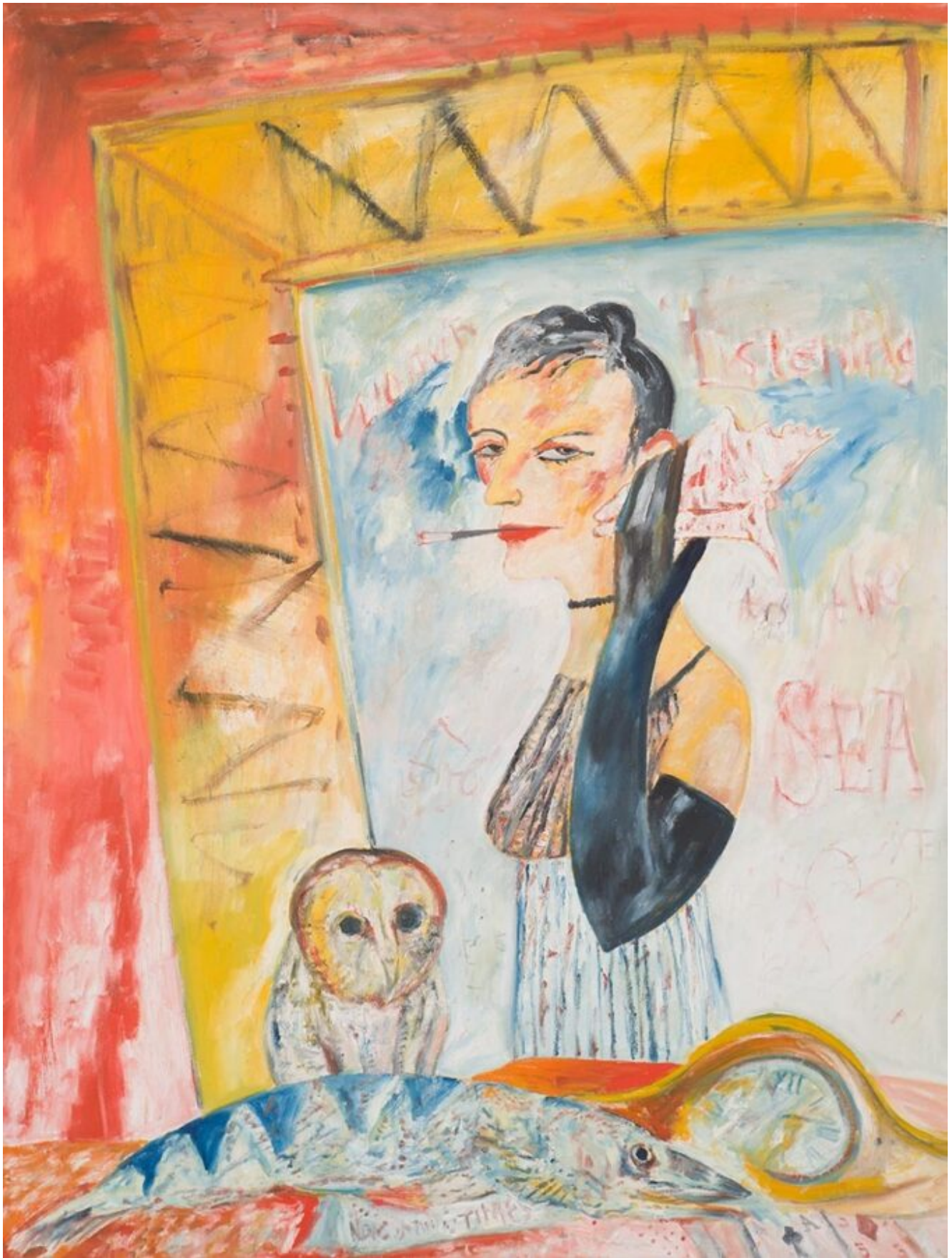
## **Chris Bushe RSW – Light on the Land**

An exhibition of new paintings from the award-winning Scottish artist, 'Light on the Land' presents sumptuous paintings filled with texture and light.

Born in 1958, Chris Bushe spent his childhood in Tornaveen, Aberdeenshire, before studying Drawing and Painting at Gray's School of Art from 1980 to 1984.

The majority of the paintings in this exhibition centre on the revisited landscapes of Bushe's childhood.

Predominantly focusing on the effects of winter light on the rich, rural countryside, this exhibition depicts the rugged landscapes of intimate, lesser known places, full of illusive patches of agriculture, rivers, forestry and gorse lands.



## John Bellany 1942 – 2013

This is an online exhibition of selected works all held by the artist's estate, specifically chosen to reflect Bellany's

celebration of Scotland.

Dating from his early days at Edinburgh College of Art to the later 2000s this exhibition will include works ranging from grand scale paintings in oil to drawings and works on paper.

Featuring many previously unseen paintings, the exhibition includes some of the most archetypal examples of the ideas and iconography that preoccupied his work throughout his prolific career.

[mail@openeyegallery.co.uk](mailto:mail@openeyegallery.co.uk)

0131 557 1020

Open Eye Gallery  
34 Abercromby Place  
Edinburgh  
EH3 6QE

Tuesday to Friday 11am to 5pm; Saturday 11am to 4pm  
Sunday & Monday closed