

Lovely new homes in the Grange on show now

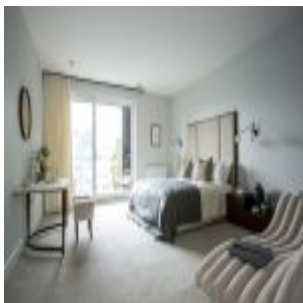
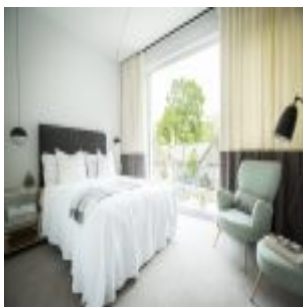


A sumptuous townhouse show home has been unveiled at Woodcroft, the new prime residential development taking shape in the heart of the Grange.

20 homes out of 33 in the first release of three phases at Woodcroft, including two top of the range penthouses, have sold already off plan ranging in price from £430,000 to £1m.

A spokesman for the developer said: "It's easy to see why Woodcroft is proving so popular. With an entrance to the development off Clinton Road and enclosed by a large walled garden containing many mature trees, this really is a lovely, leafy, secluded and secure 4.9 acre prime location with ample parking and undoubtedly, one of Edinburgh's top addresses.

"Indeed, Woodcroft is arguably *the* most significant residential development currently underway in the capital."





Woodcroft is being created and delivered by top end

developers, Queensberry Properties and their joint venture partners Telereal Trillium in partnership with top architectural practice Michael Laird Architects and Rettie & Co, one of Scotland's leading estate agencies.

When complete, the development will provide a collection of 24, three-storey four-bedroom townhouses offering bespoke family accommodation ranging in size from 2,100 sq. ft. to 3,400 sq. ft, each complete with its own private garden.

In addition, a mix of 57, one and two-bedroom contemporary apartments will also be available for sale, as well as a number of three-bedroom penthouses. The majority of apartments vary in size from 1,300 sq. ft to a 2,200 sq. ft with many featuring balconies or terraces— perfect for enjoying Woodcroft's leafy surroundings. There is lift access to all apartments and penthouses and secure entry systems to ensure peace of mind.

High-quality natural materials, including stone, zinc cladding, timber and glass, are being incorporated throughout Woodcroft, with the design and layout of the development having been carefully considered so that all of the properties blend in beautifully with their established, tranquil setting.

"All the homes are full of inspirational and elegant touches – from designer tiling and raindance showerheads in master en-suites, to beautifully crafted kitchens. There is also a range of customisable options available, so you'll be able to put your own unique signature on your new home".

Prices of the remaining properties on the first phase at Woodcroft range from £270,000 for a one-bedroom apartment to £755,000 for a four-bedroom townhouse. A further release of townhouses is expected shortly.

The Woodcroft show home is open Thursday to Monday, 11.00am to 5.30pm. To register interest or for further information on the

properties available, please contact the selling agent, Rettie & Co on 0131 220 4160 or email woodcroft@rettie.co.uk

For more information log on to the website www.woodcroftedinburgh.com